

LHD

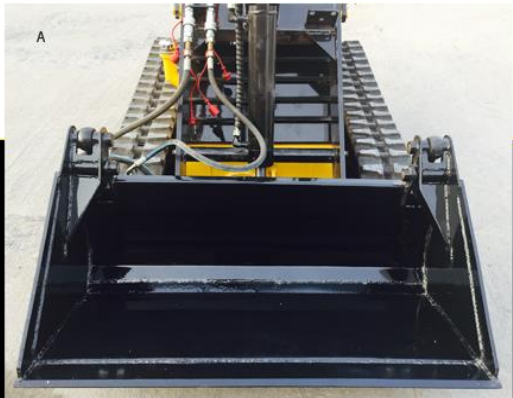


Transforming Productivity

We Believe In More Affordable Equipment
Designed and Assembled in the USA
With Parts From Around The World

LHD 2000X

SPECIFICATIONS AND FEATURES



2000

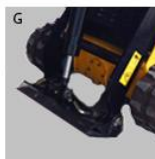
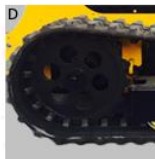
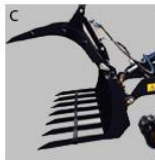
Rugged / Compact Design
Tough Treads
Wide Variety of Attachments
Single Joystick Control for Arm and Attachments
Standard Skid Steer Drive Controls
20 HP Honda Gas Engine

2000D

Adds:
25 HP Perkins
Diesel Engine

2000X

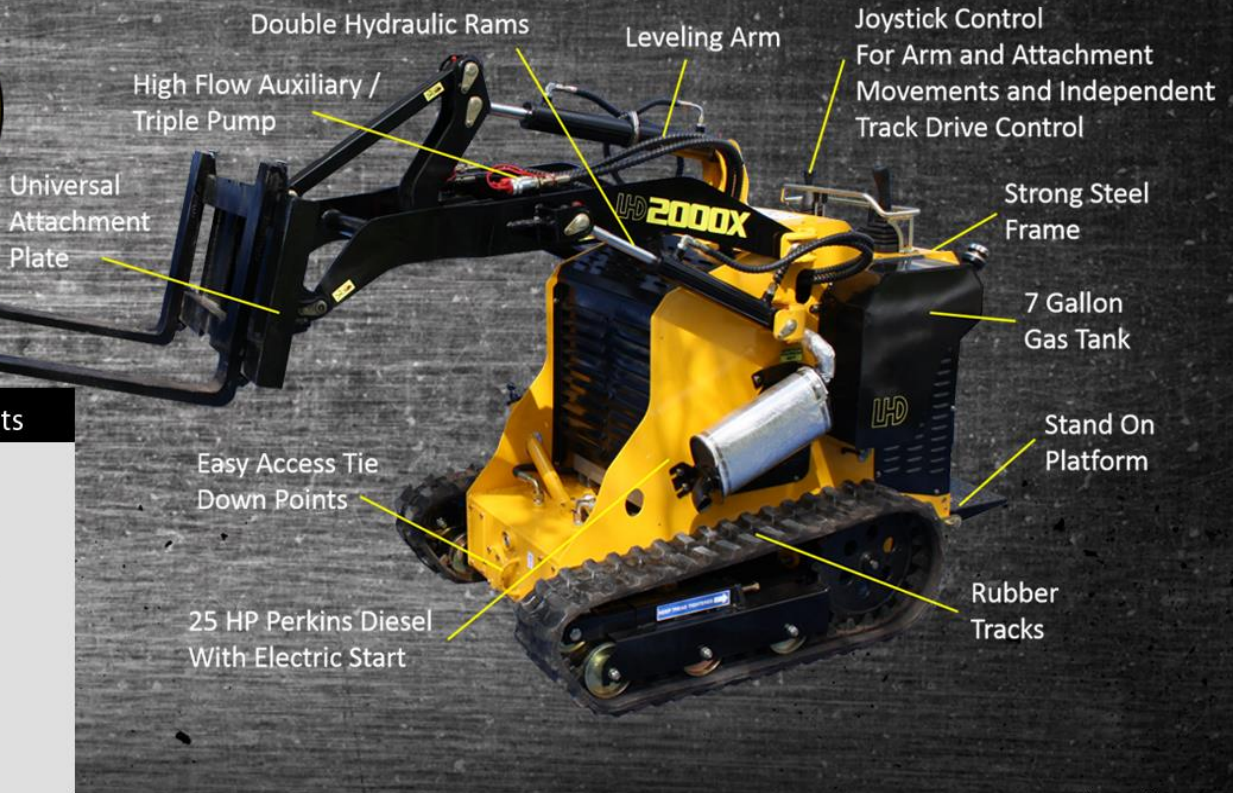
Adds:
Joystick Control for
Independent Track Drive
25 HP Perkins
Diesel Engine
Lockable Auxiliary
Variable Single Speed



Operating Capacity: 525 lbs (238 kgs)
Tipping Load: 1500 lbs (680 kgs)
Weight (No Attachment): 2271 lbs (1030 kgs)
Top Speed: 3.5 MPH
Width: 42.7 inches
Dump Height: 73.5 inches
High Flow Auxiliary / Triple Hydraulic Pump: 10.5 gal/min
Fuel Capacity: 7.2 gal (27 liters)

- A - Attachments, like the 4 in 1 Bucket, Load and Unload Material Quickly
- Steel Frame is designed for overall Strength and Performance
- B - Single Joy Stick Controls Arm and Attachment Movements
- Lightweight Enough for Single Axle Trailer
- 42.7 inch width allows for stability but also entry into small areas
- C - Always have the perfect tool for the job with universal attachments. See List on Back
- D - Rubber Tracks For Extra Load Capacity, Flotation and Traction
- E - Engine: Perkins Diesel (25hp) with Electric Start
- F - Double Hydraulic Rams for Extra Power and Stability
- G - Simple Universal Standard Connections for Attachments

LHD



Available Attachments

- Standard Bucket
- Grapple Bucket
- 4 in 1 Bucket
- Hydraulic Breaker
- Trencher
- Auger
- Pallet Fork
- Backhoe
- Mini Digger
- Snow Blower
- Mower
- Ripper
- Land Leveler
- Sweeper
- Stump Grinder
- Stone Bucket

LHD 2000X

- A - Machine Length - 99.2"
- B - Attachment Plate to Ground - 4.8"
- C - Ground Clearance - 4.1"
- D - Tallest Height of Standard Bucket - 80.2"
- E - Dump Height - 73.5"
- F - Degree of Rotation - 70
- G - Controls to Ground - 48.9"
- H - Height of Machine - 53.4"
- I - Width of Machine Body - 38.5"
- J - Tread Width - 8"
- K - Tread to Tread - 42.7"
- L - Standard Bucket Width - 43.7"
- M - Tread Length - 51.75"

